

DIA DAS BRUXAS

DOCE OU TRAVESSURA?



Morcego



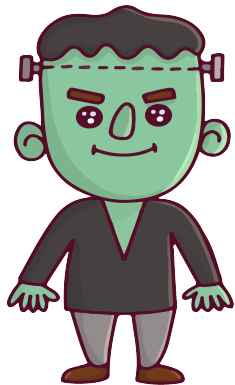
Vassoura



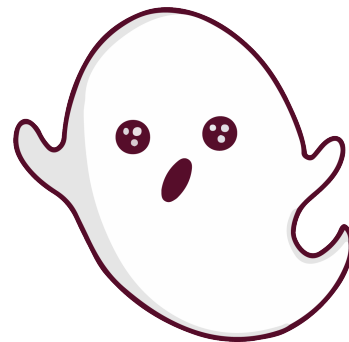
Gato preto



Vela



Frankenstein



Fantasma



Casa assombrada



Múmia

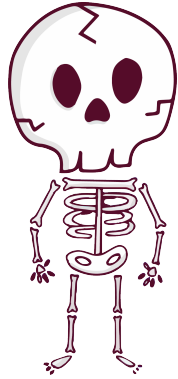


DIA DAS BRUXAS

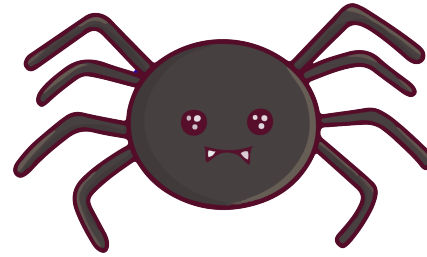
DOCE OU TRAVESSURA?



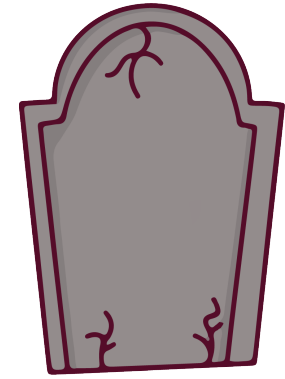
Abóbora



Esqueleto



Aranha



Túmulo



Vampiro



Lobisomem



Bruxa



Zombie

